

LITETRONICS®

LED Linear High Bay Pro

Watt and CCT Selectable

Installation Instructions

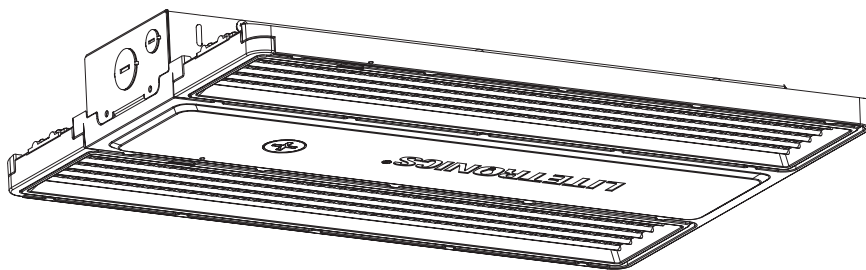
Ordering Code: LHBP Series

WHAT COMES IN THE BOX

- (1) LED Linear High Bay with 10' input wire
- (2) V-hooks
- (2) Suspension cables 10'
- (1) Installation instructions

TOOLS NEEDED

- Wire Stripper
- Wire Cutter
- Phillips Screwdriver



SAFETY INSTRUCTIONS AND WARNINGS

WHEN USING ELECTRICAL EQUIPMENT, BASIC SAFETY PRECAUTIONS SHOULD ALWAYS BE OBSERVED

READ AND FOLLOW ALL SAFETY INSTRUCTIONS.

- Risk of fire or electric shock. Linear High Bay Pro luminaire installation requires knowledge of luminaire electrical systems. If not qualified, do not attempt installation. Contact a qualified electrician.
- Be certain electrical power is OFF before and during installation and maintenance.
- Linear High Bay Pro luminaire must be connected to a wiring system with an equipment – grounding conductor.
- Make sure the supply voltage is same as the rated luminaire voltage.
- Only those open holes indicated in the photographs and/or drawings may be made or altered as a result of this fixture installation. Do not leave any other open holes in an enclosure of wiring or electrical components.
- To prevent wiring damage or abrasion, do not expose wiring to edges of sheet metal or sharp objects.
- No user serviceable parts inside of Linear High Bay Pro Luminaire.

INSTALLATION INSTRUCTIONS

READ ALL INSTRUCTIONS BEFORE BEGINNING INSTALLATION

Unbox and inspect the Linear High Bay Pro to understand its components.

- If 0-10V dimming is required, see **WIRING FOR DIMMING** steps in the following page.
- If aisle 45° x 110° beam lens is required from the default 90° x 90° standard beam, see **LENS ROTATION** steps in the following page.

Before starting installation, turn off power at circuit breaker.

A. FIXTURE WATT & CCT SETUP

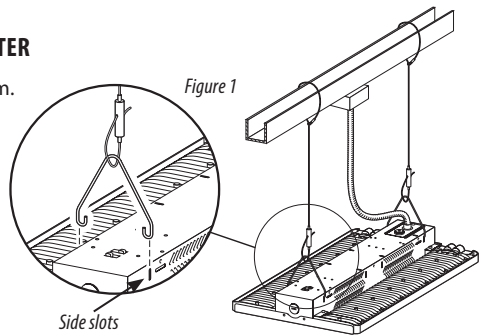
1. Locate the adjustable wattage and CCT slide switches on the top of the fixture and set to the desired watts and CCT. See slide switch settings below.

MODEL	WATTS	DEFAULT WATTS	CCT(K)	DEFAULT CCT(K)
LHBP115	115W 90W 78W	115W	5000K 4000K	5000K
LHBP155	155W 115W 78W	155W	5000K 4000K	5000K
LHBP195	195W 155W 115W	195W	5000K 4000K	5000K
LHBP245	245W 225W 185W	245W	5000K 4000K	5000K
LHBP385	385W 330W 290W	385W	5000K 4000K	5000K

B. SUSPENDING THE FIXTURE FROM A BEAM/RAFTER

2. Determine area/structure to hang fixture from.
3. Install the cables to the provided v-hooks, then mount the hangers to the four side slots of the fixture (as shown in Figure 1).

Note: If surface or pendant mounting (optional) is required, then use these compatible mounts LHBPA5SM, LHBPA5PM (sold separately).



C. WIRING FIXTURE

4. Follow steps for wiring and diagrams (Figure 2 and Figure 3).
 - a. Connect the ground (green) line to G (green).
 - b. Connect the neutral (white) line to N (white).
 - c. Connect the live power (black) line to L (black).

5. Restore power, installation is complete.

Figure 2 **120V & 277V**

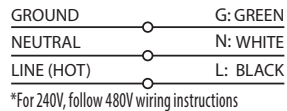
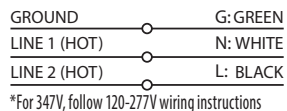


Figure 3 **480V**



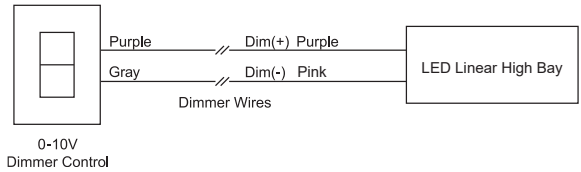
INSTALLATION INSTRUCTIONS

WIRING FOR DIMMING

Before starting wiring for dimming, turn off power at circuit breaker.

1. If 0-10V dimming is required, connect incoming dimming lines from dimmer to the Driver DIM+ (Purple) and DIM- (Pink) wires.
2. Follow dimmer manufacturers instructions.
3. After wiring is complete, restore power. Installation is complete.

WIRING DIAGRAM

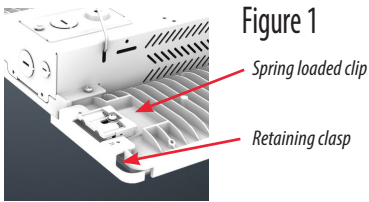


LENS ROTATION

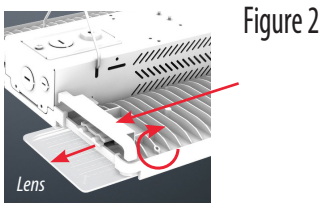
Before starting, turn off power if fixture has been previously installed.

To change the default standard beam angle $90^\circ \times 90^\circ$ to aisle beam angle $45^\circ \times 110^\circ$ follow steps.

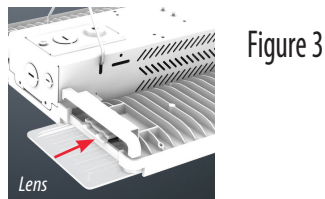
1. On desk, floor or if fixture has been previously been installed, hold the fixture steady with one hand. Push hard on the round tab of the spring loaded clip with two fingers to open retaining clasp (Figure 1).



2. Rotate the retaining clasp 90° to take out the lens from housing. Pull out lens from the housing (Figure 2).



3. Horizontally rotate lens 180° to convert to the aisle beam ($45^\circ \times 110^\circ$). Then re-insert the lens back into position into housing. (Figure 3).



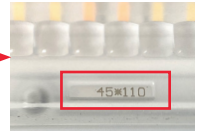
Step 3 Continued

- a. To ensure that the correct beam angle is set after conversion, check beam indicator.

Standard: $90^\circ \times 90^\circ$



Aisle: $45^\circ \times 110^\circ$



- b. Beam indicator locations on fixture before and after conversion.

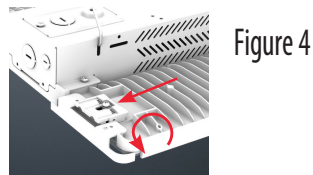
Standard: $90^\circ \times 90^\circ$



Aisle: $45^\circ \times 110^\circ$



4. Hold fixture in place with one hand and push the spring loaded clip. Push down the retaining clasp back into position and release spring loaded clip to close (Figure 4).



5. Repeat steps to rotate the lens on the opposite side of fixture.
6. Lens rotation is now complete, restore power.



Thank you for choosing

LITETRONICS®

6969 W. 73rd Street
Bedford Park, IL 60638

WWW.LITETRONICS.COM

CustomerService@Litetronics.com or 1-800-860-3392



The information and product specifications contained in these instructions are based upon data believed to be accurate at the time of printing. This information is subject to change without notice and without incurring liability. If you have questions regarding specific product details, please contact us at 800-860-3392 or via email at customerservice@litetronics.com.

To check for an updated version of these instructions, please visit www.litetronics.com.